

## Stantec Public Information Comment Summary

### Sign-In Data:

District 2 - 30 attendees

Districts 2 & 4 - 15 attendees

District 6 - 22 attendees

District 3 - 22 attendees

Districts 9 & 10 - 8 attendees

Districts 8 & 10 - 7 attendees

District 11 - 18 attendees

District 10 - 28 attendees

District 1 - 32 attendees

Districts 4 & 5 - 17 attendees

District 7 - 25 attendees

### District 1- Meeting on 01/22/24

Ballentine Community Center

1053 Bird Rd, Irmo, SC 29063

US 176 at Bickley Road needs a traffic signal due to blind spots.

Broad River Road at Royal Tower Drive needs a traffic signal.

Broad River Road at Caedmon's Creek Drive needs a traffic signal.

Broad River Road at Farming Creek needs a traffic signal.

Dutch Fork Road at Mill Place Drive needs a traffic signal.

Bickley Road at Broad River needs a traffic signal.

Koon Road at Broad River needs a right turn lane.

Centerfield at Broad River Road needs a stop light in front of Spring Hill High School.

Broad River Road needs sidewalk where it meets Kennerly and carried down past the Publix, due to heavy foot traffic along the sides of the street.

Need sidewalk along Shady Grove Road.

Need sidewalks along Shady Grove Road from the Ashford Neighborhood to Dutch Fork High School.

Dutch Fork Road bridge near Walmart needs to be widened, as well as the road up past the Chick Fil A.

Request for an exit ramp off of I-26 at Koon Road and Shady Grove.

Continue road widening of Hwy 76 to Chapin and Hwy 176 past Chapin Road.

Add bike lanes on Kennerly Road beginning at the Freshly Mill Road intersection all the way to Saint Johns Road.

Continue sidewalks on Marina Road and Johnson Marina Road.

Make golfcart paths in Ballentine along roads.

Utilize flashing lights at intersections after midnight to avoid waiting at an empty light.

#### **District 2- Meetings on 02/21/24 & 02/22/24**

St. Andrews Park

920 Beatty Rd, Columbia, SC 29210 &

Doko Manor

100 Alvina Hagood Cir. Bythewood, SC 29016

Desires an offset bike path along Broad River Road from St. Andrews area to downtown Columbia.

Longcreek needs sidewalk and better lighting.

Need additional bike lanes.

Blythewood/Main/Langford Intersection needs major improvements.

Widen Langford, Wilson, Main, and Blythewood Roads.

Hardscrabble Road needs widened to Langford Road intersection.

Request to extend Creech Road down to Firetower.

Two Notch and Polo Road Intersection needs resurfacing and other safety improvements.

- Recommended to Build double left turn lanes on Two notch and Polo at this intersection to improve the signal cycle times at peak times for school traffic and peak hour times.

Request for sidewalk on east side of Trenholm Rd. Extension ( School side) from Decker to Two Notch

Request to level and resurface Lakeshore Drive from Forest Dr. to Overcreek Rd. to include the entire intersection of Northridge, Lakeshore, and Robinwood Rds. (Due to potholes, sinkholes, tree roots pushing up the roadway, and utility cuts that have sunken in the road)

Intersection Improvements at Rt. 21, Blythewood Rd., and Langford Rd.

Langford Rd and Rt.21 (Wilson Rd) request for widening to allow for at least two lanes each way with designated turn lanes.

Request for turn lanes for Blythewood Rd. (Get rid of the flashing yellow left turn lights and provide dedicated left turn green arrows to provide for safer left turns.)

Provide yellow flashing lights at Doko Park that can be operated by local police when there is an event at the park. Getting into or out of the park at peak times and at the same time as "rush hour" creates backup and additional frustration that could lead to road rage issues.

Request to widen Percival from Forest Dr to Decker

Request to widen Percival from I-77 to Clemson Rd.

Request to install traffic signal at Percival at Smallwood.

### **District 3- Meeting on 02/12/24**

New Castle-Trenholm Acres Community Center

5819 Shakespeare Rd, Columbia, SC 29223

Request for sidewalks on Roof Street.

Roof Street has a high hill that skews visibility.

The Trenholm Acres Neighborhood needs sidewalks on: Roof, Shakespeare, and Claudia.

Roof Street needs improved lighting along the road.

Parklane Road currently has a dangerously steep curb and very narrow entrances to the Adult Activity Center.

Request for the removal of the median barrier to ease left turn lanes on Decker Boulevard across from Dentsville Schools.

Residents of New Castle indicated speed humps were previously promised in the neighborhood.

Request for noise walls on Warner Drive.

Drainage is a significant problem on Warner Drive, when it rains, a huge pool of water covers both lanes at the curve between Saxonbury Drive and at Elite Street. Additionally, the stormwater drain is covered with waste and clearing debris.

A blind curve causes drivers to run the fencing that separates the frontage road from the I-277 on-ramp from Fontaine Road.

There are huge holes that need to be filled on Redwood Court in the curve after turning right from Carlton Drive.

Very large holes need to be filled on Oakley Drive.

Sidewalks to be incorporated throughout Trenholm Acres.

Drainage improvements needs on Humphrey Drive

#### **District 4- Meeting on 01/18/24 & 02/21/24**

Richland County Library

1431 Assembly St, Columbia, SC 29201 &

St. Andrews Park

920 Beatty Rd, Columbia, SC 29210

More green leading arrows for left turns at lights.

Riverhill Circle needs sidewalk down the entirety of both intersections with Broad River Road.

Request to provide residents of the numerous apartment complexes along Longcreek Drive (The Waterford, The Hollows, The Park, Carnaby Square, etc) a sidewalk.

Request for improvements along Beatty Road (for pedestrians and bikers). there is currently no bike lane, and the sidewalks ends not a quarter of a mile very abruptly into the brush.

City of Columbia DAC:

Request to shorten signal cycles.

Request to apportion green light time in a 3:2 ratio on minor intersections.

Recommendation to lengthen time of walk signals.

Lengthen yellow light durations on roads with higher speeds (EX: Assembly, Elmwood, Taylor)

Better enforcement of violations/more cops stations around the district.

Request for a new pedestrian crosswalk on Sumter connecting Prisma hospital; to parking garage.

Need for high-visibility crosswalk markings.

Arsenal Hill HOA:

Additional sidewalks so it is possible to walk around an entire downtown block without having to walk in the road. Sections of roadways that are currently missing sidewalks are:

- a) Pulaski -between Laurel and Blanding
- b) Blanding -between Blanding and Gadsden
- c) Gadsden - between Blanding and Taylor (along Finlay park side)

Improve pedestrian crossing at Wayne and Laurel.

Improve Pedestrian crossing at Blanding and Gadsden (approaching Finlay park).

Improve Pedestrian crossing at Huger and Laurel (approaching riverfront park).

#### **District 5- Meeting on 01/18/24**

Richland County Library

1431 Assembly St, Columbia, SC 29201

Intersection Improvements at: Assembly Street to lady Street, Huger Street to Lady Street, Assembly Street to Gervais Street, Huger Street to Gervais Street, Lady Street to Gervais Street.

Retime lights near hotels and on campus near dorms.

Sidewalk all over the USC campus area to support large number of pedestrians, specifically Gervais to Blossom on both sides of Huger Street.

Stoneridge Drive needs sidewalk from Greystone Boulevard to Skyland Drive.

#### **District 6- Meeting on 02/15/24**

Richland Library Cooper

5317 Trenholm Rd, Columbia, SC 29206

Lakeshore and Forest Drive area are in need of speed humps.

Trenholm Road needs resurfacing (From Forest Drive to Gervais)

Gills Creek at Rosewood need signal timing improvements.

A connector road is needed from Penhnam Road onto Indian Road.

Request for Adaptive signals on Bull Street.

Turn lanes needed from Lakeshore traffic turning onto New Forest Lake Place bridge Road. Additionally, repaving requested for Forest Lake Place.

Valleybrook, Brenthaven Road, Vanwood Drive, and Sachel Ford Terrace need repaving.

**District 7- Meeting on 01/16/24**

Adult Activity Center

7494 Parklane Rd, Columbia, SC 29223

Repaving needed on Clubhouse Road.

Repaving needed on Meadow Lane.

Request for the reopening and repaving of Edgewater Drive and for the addition of speed humps (Springwood Lakes neighborhood).

Improved drainage necessary due to Farrow Road down Killian Road dumping drainage into: Davis Smith Road, Killian Loop, and Albert Allen.

Bayfield Road requires repaving due to potholes.

Request for speed humps on Bayfield Road.

Millbrook needs repaving.

Request for sidewalks on Wilson Boulevard.

Improved drainage needed on Davis Smith.

Request for Crescent Lake Dam to be rebuilt.

Widening needed from Longtown Road East/West to S55.

Sidewalk desired along Blue Ridge Terrace beginning at Monticello Road.

Sidewalk desired along Blue Ridge Terrace from Forest Heights Elementary to Heyward Brockington.

**District 8- Meeting on 02/07/24**

North Springs Park

1320 Clemson Rd, Columbia, SC 29229

Widen North Springs Road toward Clemson.

Intersection of North Springs at Millfield Road needs to be realigned.

Add sidewalks at/around all public schools in the district.

Wildwood neighborhood roads need to be resurfaced, specifically at: Cricket Hill Road, Leaning Tree Road, and Holiday Road.

Constant speeding and illegal passing is observed on Brookfield Road.

Columbia Mall Greenway to be advanced and constructed.

#### **District 9- Meeting on 02/08/24**

North Springs Park

1320 Clemson Rd, Columbia, SC 29229

Maintenance where Summit Parkway intersects Hard Scrabble.

Left turn improvements out of the Ashcroft Community onto Clemson.

Interchange improvements at Spears Creek Church Road: Traffic backs onto the interstate due to short ramping; the bridge is narrow and it is difficult to turn left from I-20E.

Improved ingress/egress from neighborhoods and businesses needed in the Spears Creek Church and Percival Roads vicinity.

Opportunity for another interchange on the Richland County side (before entering Kershaw County) after Spears Creek Church Road. Something before White Pond Road is requested.

Sidewalk requests down Two Notch Road.

COMET needs more sheltered bus stops on Two Notch Road.

Request to Widen Bookman Rd from Two Notch to Kelly Mill Rd

Intersection Improvement where Bookman Rd meets Old Two Notch Rd/Plantation Pointe Dr. (Impossible to make a left.)

Finish walk/bike paths. The walk/bike paths on Clemson Rd.

extended to Rhame Road and to Sparkleberry Ln.

At the Clemson Rd and Two Notch Rd interchange, request for large green overhead signs to be installed at the off ramps.

Request to widen North Springs Rd to three lanes all the way through.

Aesthetic idea: Richland County needs to partner with landscape companies to landscape medians.

Aesthetic idea: Richland County needs to purchase property to build large parks with walking paths, ball diamonds and pavilions ect..

At the Hwy 378 and Hwy 601 interchange, request for large green overhead signs to be installed at the off ramps.

Request for a turn lane at McCords Ferry Rd (601) and Screaming Eagle Rd.

Install street name signs at all overhead traffic lights.

Safety idea: There are new traffic signaling devices for emergency vehicles to turn intersections to green similar to a GPS system. SC-DOT is aware of this new system. All traffic lights should have this system.

#### **District 10- Meeting on 01/23/24 and 02/08/2024**

Eastover Park

1031 Main St, Eastover, SC 29044 &

North Springs Park

1320 Clemson Rd, Columbia, SC 29229

Streetlights requested at all major intersections in the Lower Richland Rural area: Old Hopkins Road & Air Base Road, Lower Richland Boulevard & Cabin Creek, Lower Richland Boulevard & Horrell Hill Road, Lower Richland Boulevard & Bluff Road, Bluff Road & Martin Luther King Boulevard, Bluff Road & Clarkson Road, Bluff Road & Goodwin Road, Bluff Road & Old Bluff Road, Bluff Road & Congaree Road, Horrell Hill Road & Air Base Road.

Turn lanes requested at: Bluff Road to Lower Richland Boulevard, Bluff Road to Martin Luther King Boulevard, and Bluff Road to Congaree Road.

Request for lighting along major intersections for nighttime visibility: Bluff Road & Lower Richland Boulevard, Clarkson, Goodwin & Congaree, & Air Base Road.

Improvements on Atlas Road.

Request for sidewalks in Olympia.

Olympia Avenue and Bluff Road in need of intersection improvements.

Request for speed humps in all residential areas.

Griffins Creek Road to Poultry in need of repaving.

Community Pond Road has a persistent drainage issue.

Griffin Creek Road is currently paved but has narrow lanes and is very rough.

#### **District 11- Meeting on 01/30/24**



Garners Ferry Adult Activity Center  
620 Garners Ferry Rd, Hopkins, SC 29061

Pave Crosscreek Lane.

Trotter at Coffman Road needs a stop light.

More cameras at high-trafficked areas of the city/town.

Request for a hospital for S.E. Columbia/Hopkins.

Request for an extension of Shop Road.

Sanview Drive at Caroline Road needs to be repaved.

Garners Ferry Road needs to be widened East and Westbound.

Request for more traffic lights from Fairmont to Trotter Road.

Garners Ferry Road needs widened in the Lower Richland High School vicinity.

Caroline Road needs to be resurfaced.

Access control at businesses needs to be improved at the intersection of Garners Ferry/Lower Richland opposite LR High School.

Signal timing needs to be improved along Garners Ferry.

The Galaxy Neighborhood has multiple roads that need to be resurfaced including Neptune, Saturn, Mars, and Venus.

More sidewalks are needed along Lower Richland Blvd past the LR High School.

Drainage improvements are needed along Caughman between Trotter and Benson.

Repaving Raintree Lane needed (Green Lakes neighborhood)

Green Lake Drive: uneven surface, road is higher than curbs due to constant paving-over, and needs drainage improvements.

Patterson Road off Garners Ferry in need of widening and sidewalks on the east side (due to the elementary school).

Request for speed humps on Green Lakes Drive.

Repave/fill potholes on Flowerwood (Green Lakes)

Request for park area in Green Lakes.

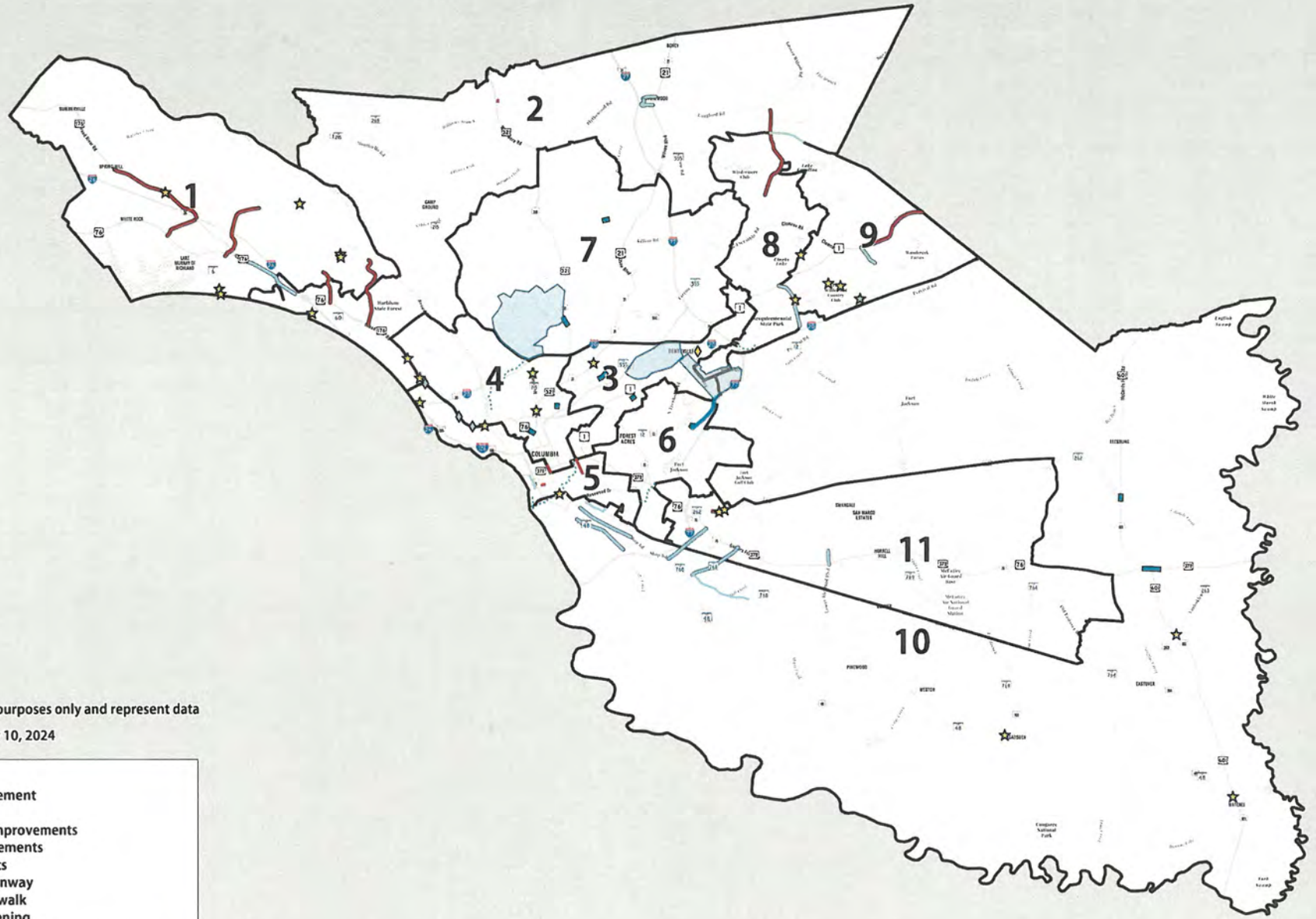
Request for Auburn Leaf Drive, Spreading Branch, and Tilting Rock repaving.

fully repave Hallbrook Drive - from Garners Ferry to Caughman Rd



# RICHLAND COUNTY TRANSPORTATION PLANNING MEETING 2024

## CURRENTLY PLANNED PROJECTS



### Disclaimer

Displays are for planning purposes only and represent data available through January 10, 2024

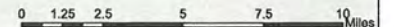
### Legend

- SCDOT - Bridge Replacement
- COATS - Widening
- ☆ COATS - Intersection Improvements
- ◇ COATS - Safety Improvements
- COATS - Special Projects
- ⋯ Richland County - Greenway
- Richland County - Sidewalk
- Richland County - Widening
- ☆ Richland County - Intersection Improvements
- Richland County - Special (Widening/Extension)
- Richland County - Special (Neighborhood Improvement)
- ◇ Richland County - Special (Intersection Improvement)



### Additional Improvements

Road resurfacing = \$6 million/year, growing YoY 5%  
Paving Dirt Road = \$8 million/year



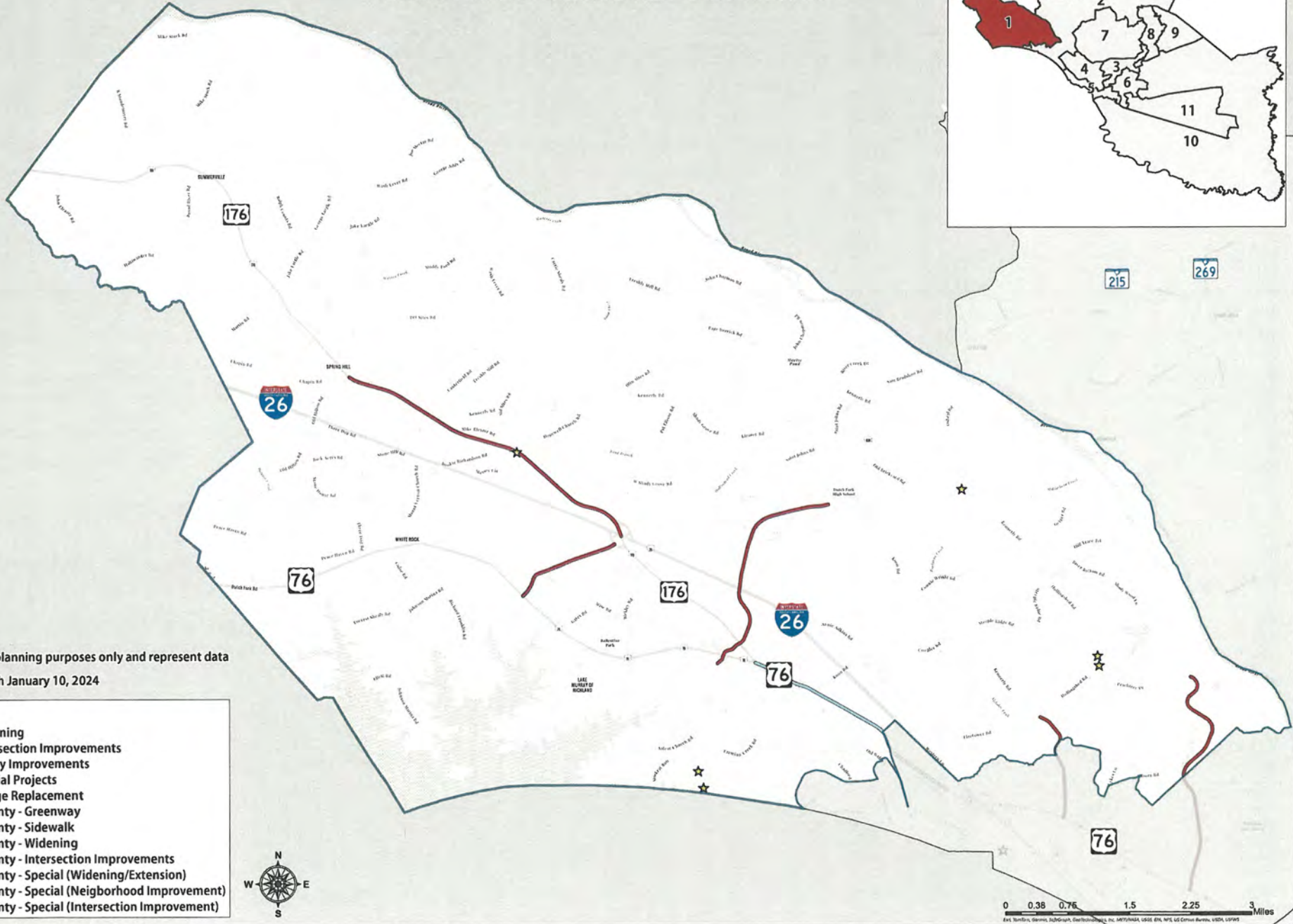
ESRI, Bentley, Garmin, DeLorme, GeoEye, IGN, GeoIQ, Mapbox, Swatch, Swire, Bing, Aero, IGN, Mapbox, ESRI, DeLorme, Garmin



# RICHLAND COUNTY TRANSPORTATION PLANNING MEETING 2024

## COUNCIL DISTRICT 1

### CURRENTLY PLANNED PROJECTS



**Disclaimer**  
 Displays are for planning purposes only and represent data available through January 10, 2024

- Legend**
- COATS - Widening
  - ★ COATS - Intersection Improvements
  - ◇ COATS - Safety Improvements
  - COATS - Special Projects
  - SCDOT - Bridge Replacement
  - ... Richland County - Greenway
  - Richland County - Sidewalk
  - Richland County - Widening
  - ★ Richland County - Intersection Improvements
  - Richland County - Special (Widening/Extension)
  - Richland County - Special (Neighborhood Improvement)
  - ◇ Richland County - Special (Intersection Improvement)

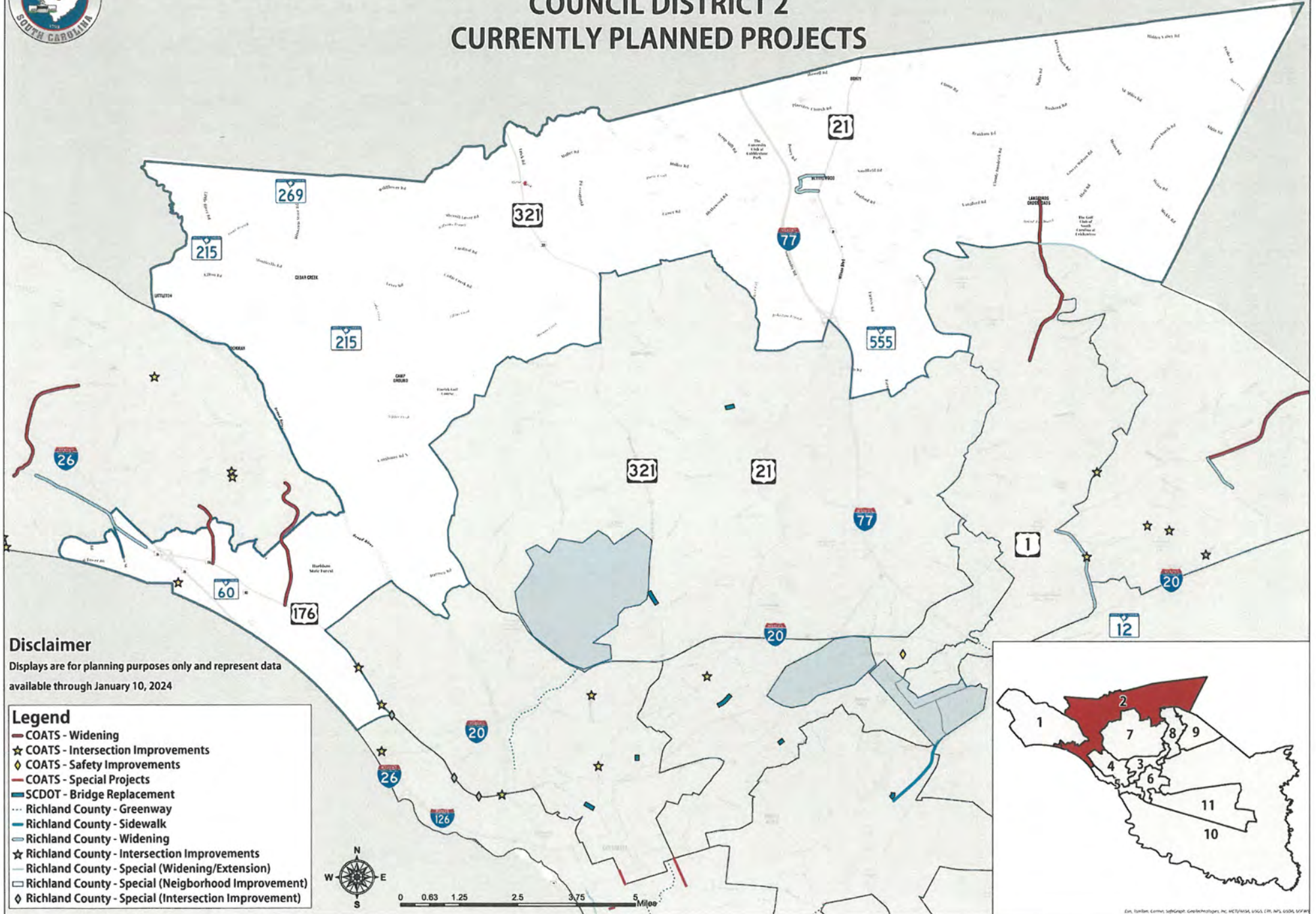
0 0.38 0.76 1.5 2.25 3 Miles  
Map Symbols: Service, 2020; North Carolina, 2020; Richland County, 2020; I-26, SR 176, SR 76, SR 215, SR 269



# RICHLAND COUNTY TRANSPORTATION PLANNING MEETING 2024

## COUNCIL DISTRICT 2

### CURRENTLY PLANNED PROJECTS

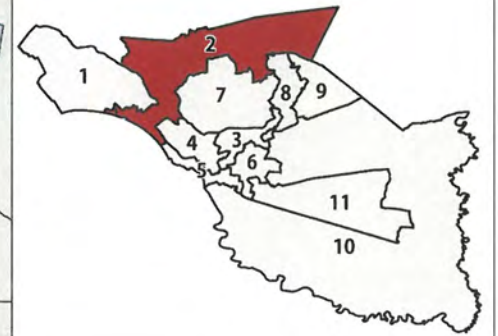
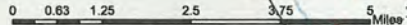


**Disclaimer**

Displays are for planning purposes only and represent data available through January 10, 2024

**Legend**

- COATS - Widening
- ★ COATS - Intersection Improvements
- ◆ COATS - Safety Improvements
- COATS - Special Projects
- SCDOT - Bridge Replacement
- Richland County - Greenway
- Richland County - Sidewalk
- Richland County - Widening
- ★ Richland County - Intersection Improvements
- Richland County - Special (Widening/Extension)
- Richland County - Special (Neighborhood Improvement)
- ◆ Richland County - Special (Intersection Improvement)



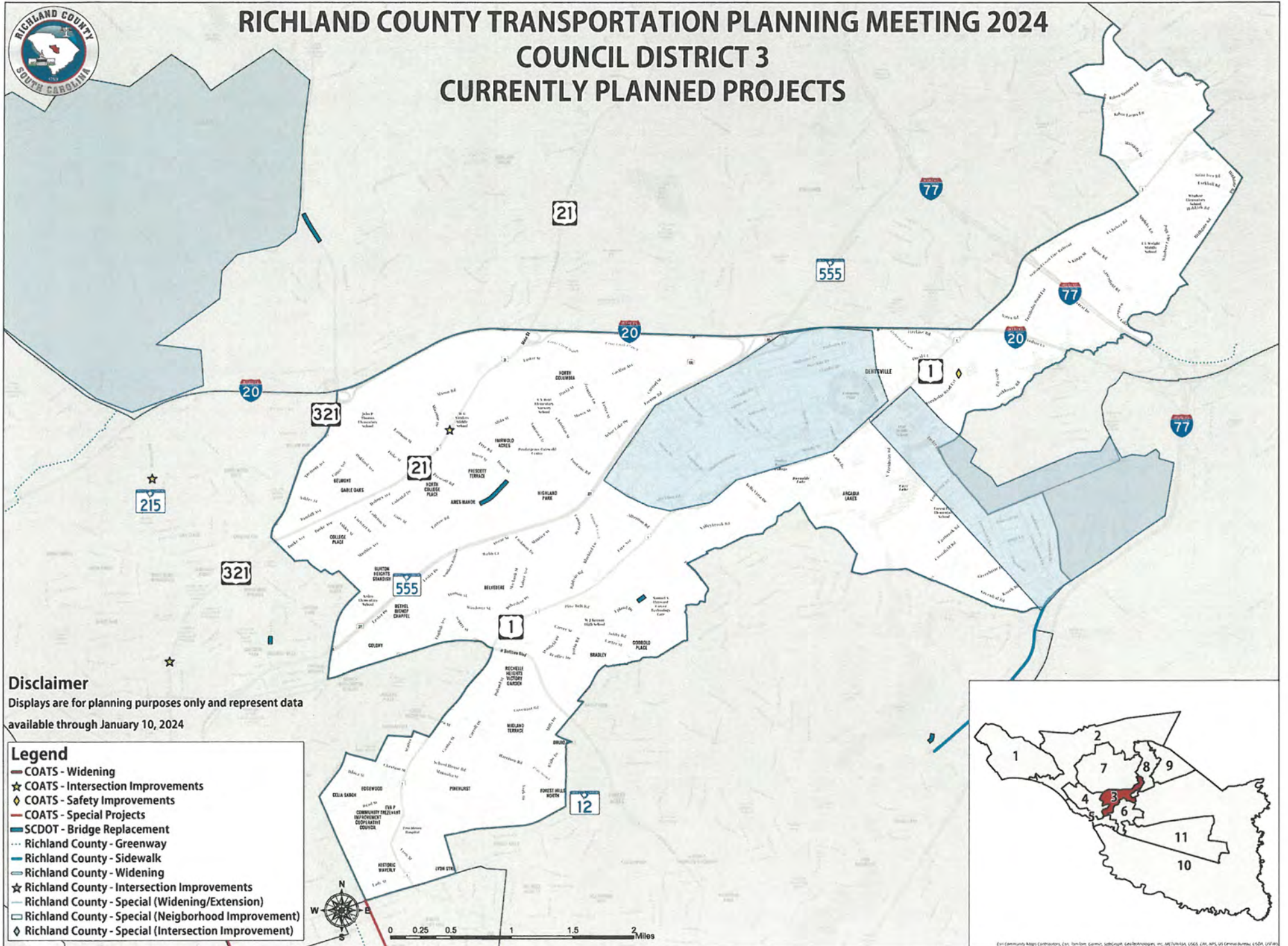
Map: TomTom, Corbis, iStockphoto, Google/Mapbox, Inc. MET/NOAA, USGS, EPA, APFS, USGS, SOTM



# RICHLAND COUNTY TRANSPORTATION PLANNING MEETING 2024

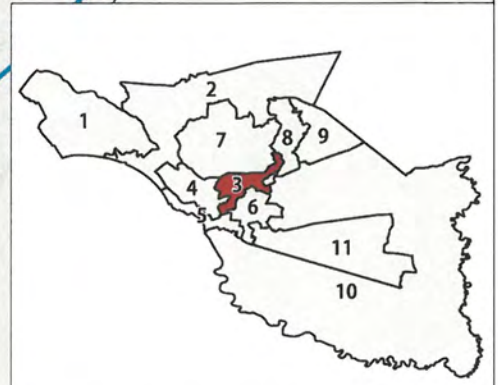
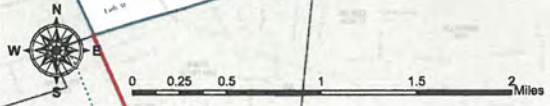
## COUNCIL DISTRICT 3

### CURRENTLY PLANNED PROJECTS



**Disclaimer**  
 Displays are for planning purposes only and represent data available through January 10, 2024

- Legend**
- COATS - Widening
  - ★ COATS - Intersection Improvements
  - ◇ COATS - Safety Improvements
  - COATS - Special Projects
  - SCDOT - Bridge Replacement
  - ⋯ Richland County - Greenway
  - Richland County - Sidewalk
  - Richland County - Widening
  - ★ Richland County - Intersection Improvements
  - Richland County - Special (Widening/Extension)
  - Richland County - Special (Neighborhood Improvement)
  - ◇ Richland County - Special (Intersection Improvement)

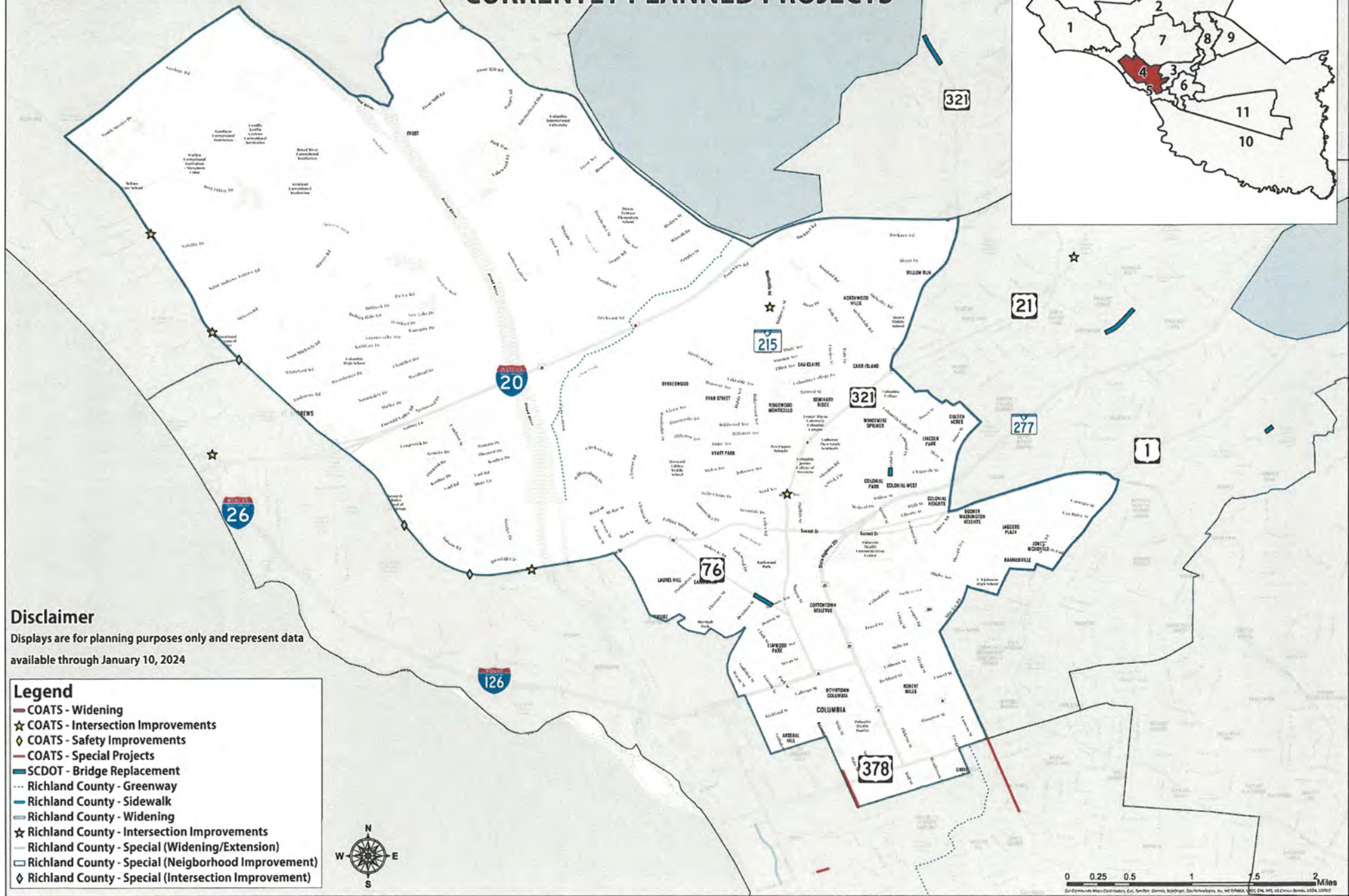
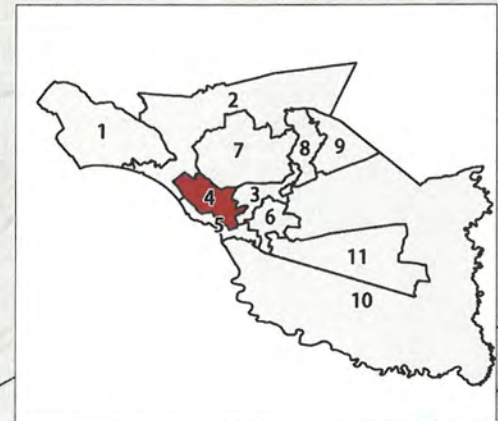


ESRI (ArcMap), Mapbox Contributors, Esri, Garmin, Google, Mapbox, OpenStreetMap contributors, Swatch, NOAA, USGS, EPA, APF, US Census Bureau, USDA, USFWS



# RICHLAND COUNTY TRANSPORTATION PLANNING MEETING 2024

## COUNCIL DISTRICT 4 CURRENTLY PLANNED PROJECTS



**Disclaimer**  
 Displays are for planning purposes only and represent data available through January 10, 2024

**Legend**

- COATS - Widening
- ☆ COATS - Intersection Improvements
- ◇ COATS - Safety Improvements
- COATS - Special Projects
- SCDOT - Bridge Replacement
- Richland County - Greenway
- Richland County - Sidewalk
- Richland County - Widening
- ☆ Richland County - Intersection Improvements
- Richland County - Special (Widening/Extension)
- Richland County - Special (Neighborhood Improvement)
- ◇ Richland County - Special (Intersection Improvement)

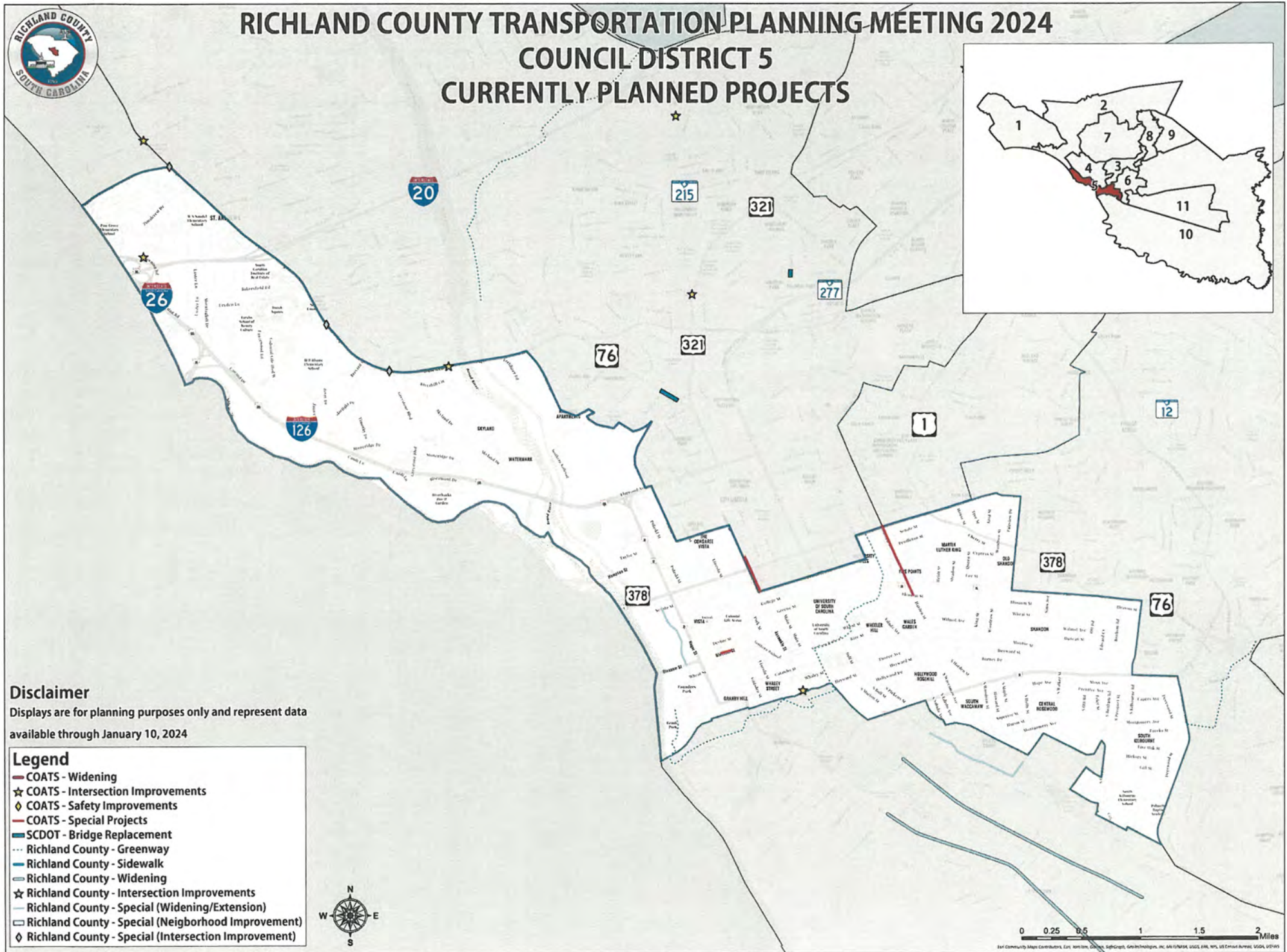
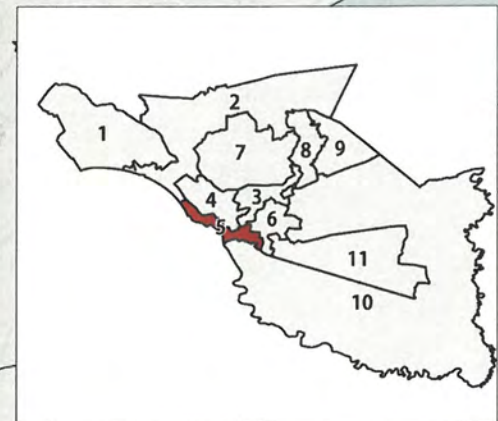




# RICHLAND COUNTY TRANSPORTATION PLANNING MEETING 2024

## COUNCIL DISTRICT 5

### CURRENTLY PLANNED PROJECTS



#### Disclaimer

Displays are for planning purposes only and represent data available through January 10, 2024

- Legend**
- COATS - Widening
  - COATS - Intersection Improvements
  - COATS - Safety Improvements
  - COATS - Special Projects
  - SCDOT - Bridge Replacement
  - Richland County - Greenway
  - Richland County - Sidewalk
  - Richland County - Widening
  - Richland County - Intersection Improvements
  - Richland County - Special (Widening/Extension)
  - Richland County - Special (Neighborhood Improvement)
  - Richland County - Special (Intersection Improvement)



0 0.25 0.5 1 1.5 2 Miles

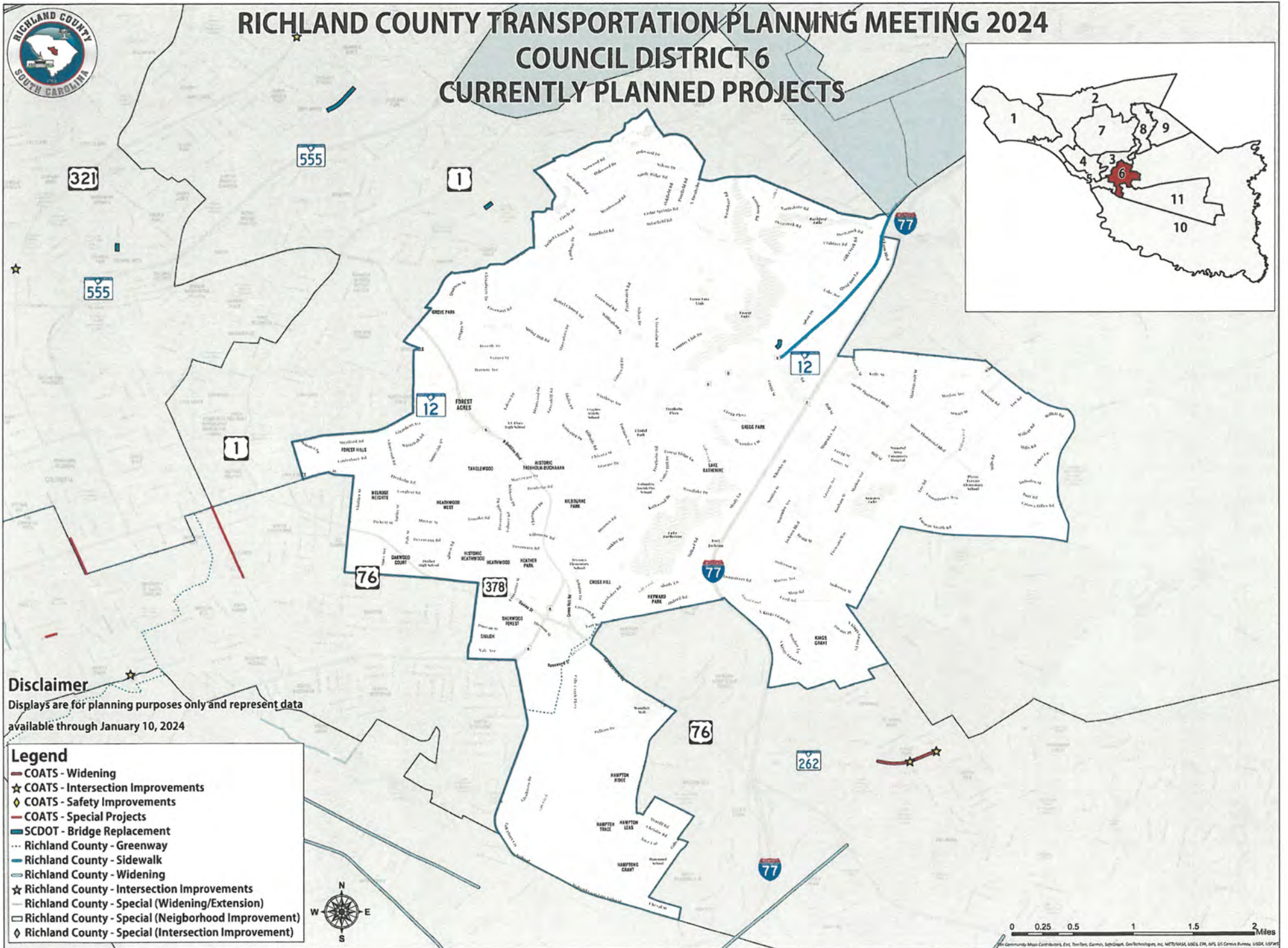
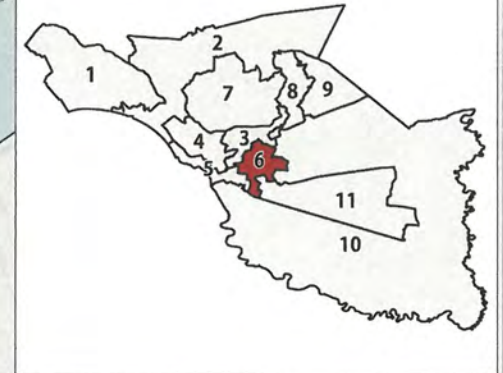
Leaflet | Map data © OpenStreetMap contributors, Imagery © Mapbox, © OpenStreetMap contributors, © Mapbox, © OpenStreetMap contributors, © Mapbox, © OpenStreetMap contributors, © Mapbox, © OpenStreetMap contributors, © Mapbox, © OpenStreetMap contributors, © Mapbox



# RICHLAND COUNTY TRANSPORTATION PLANNING MEETING 2024

## COUNCIL DISTRICT 6

### CURRENTLY PLANNED PROJECTS

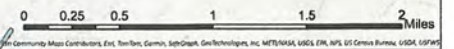


**Disclaimer**

Displays are for planning purposes only and represent data available through January 10, 2024

**Legend**

- COATS - Widening
- ☆ COATS - Intersection Improvements
- ◇ COATS - Safety Improvements
- COATS - Special Projects
- SCDOT - Bridge Replacement
- ... Richland County - Greenway
- Richland County - Sidewalk
- Richland County - Widening
- ☆ Richland County - Intersection Improvements
- Richland County - Special (Widening/Extension)
- Richland County - Special (Neighborhood Improvement)
- ◇ Richland County - Special (Intersection Improvement)



© Esri, DeLorme, Garmin, IBM, Intel, Microsoft, Oracle, SAP, Spherion, Verizon, and others. All rights reserved. Esri, DeLorme, Garmin, IBM, Intel, Microsoft, Oracle, SAP, Spherion, Verizon, and others are trademarks of their respective owners.

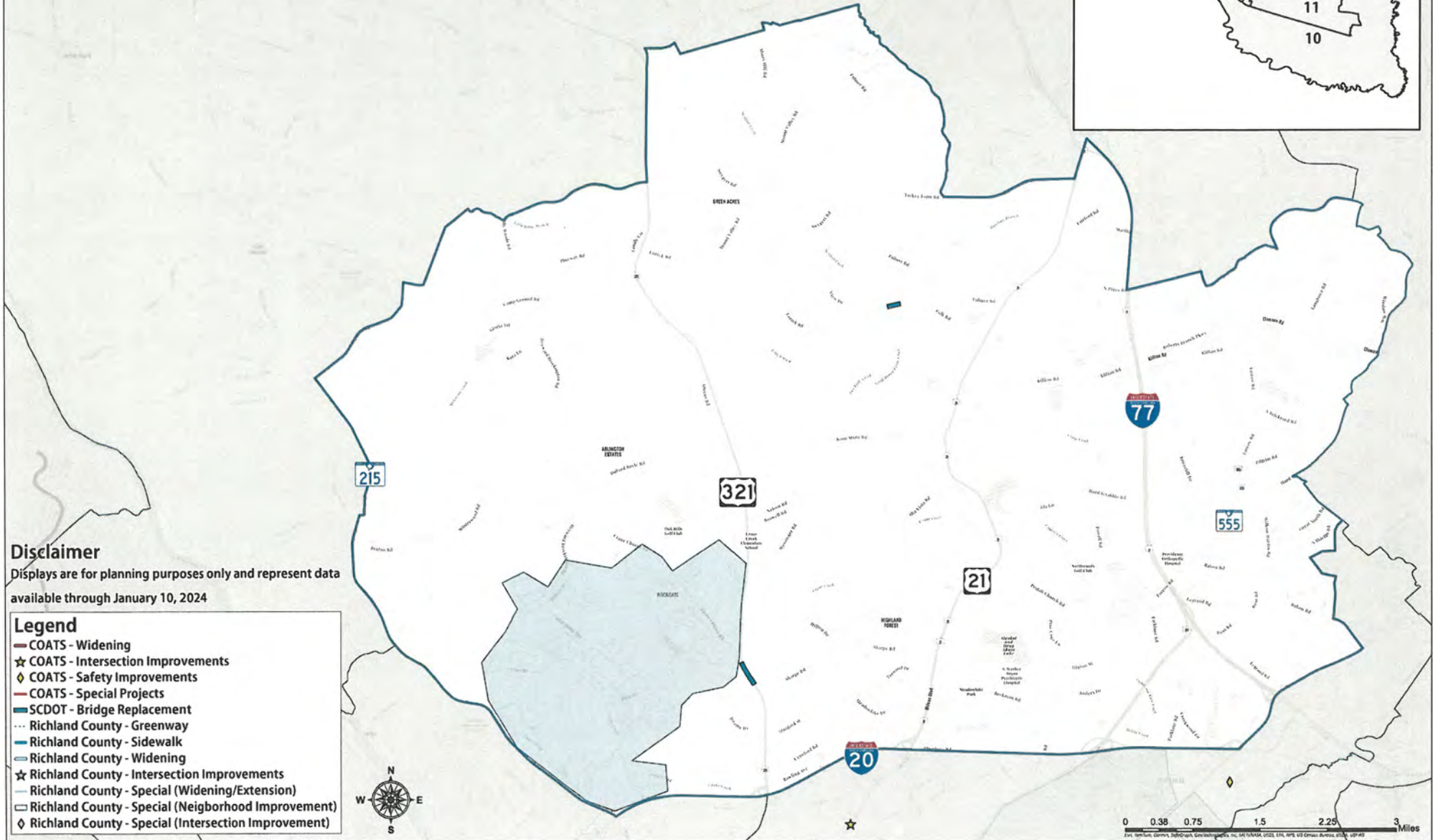
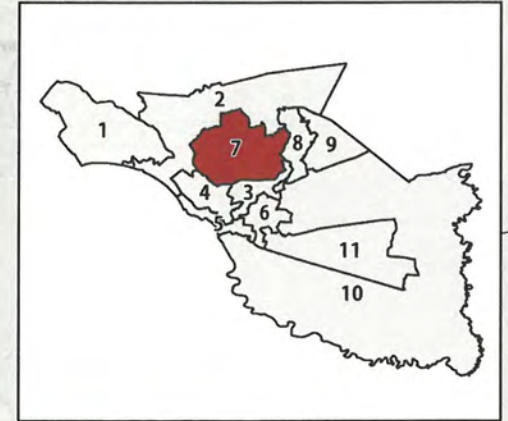




# RICHLAND COUNTY TRANSPORTATION PLANNING MEETING 2024

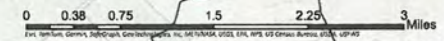
## COUNCIL DISTRICT 7

### CURRENTLY PLANNED PROJECTS



**Disclaimer**  
 Displays are for planning purposes only and represent data available through January 10, 2024

- Legend**
- COATS - Widening
  - ☆ COATS - Intersection Improvements
  - ◇ COATS - Safety Improvements
  - COATS - Special Projects
  - SCDOT - Bridge Replacement
  - ... Richland County - Greenway
  - Richland County - Sidewalk
  - Richland County - Widening
  - ☆ Richland County - Intersection Improvements
  - Richland County - Special (Widening/Extension)
  - Richland County - Special (Neighborhood Improvement)
  - ◇ Richland County - Special (Intersection Improvement)

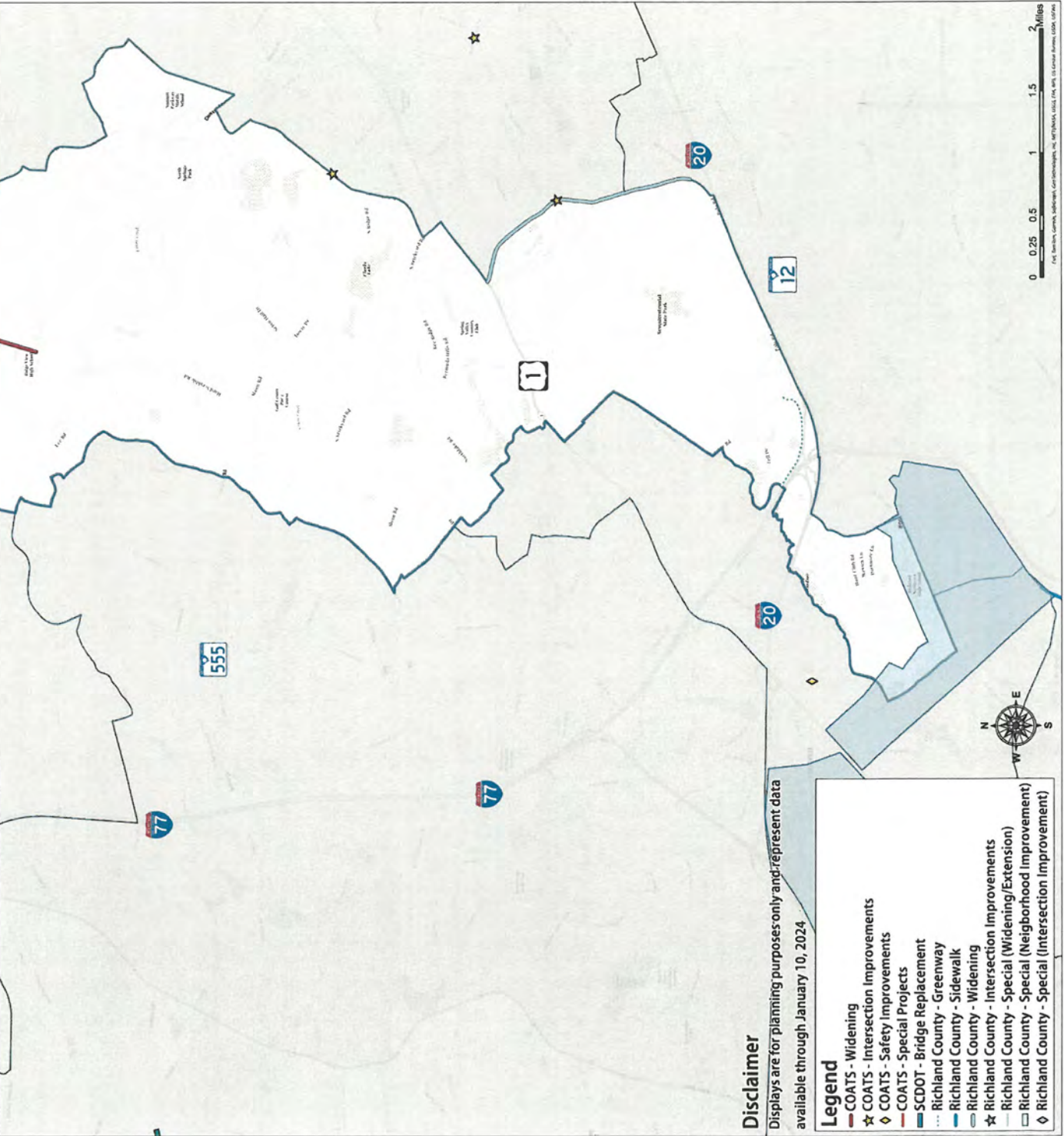
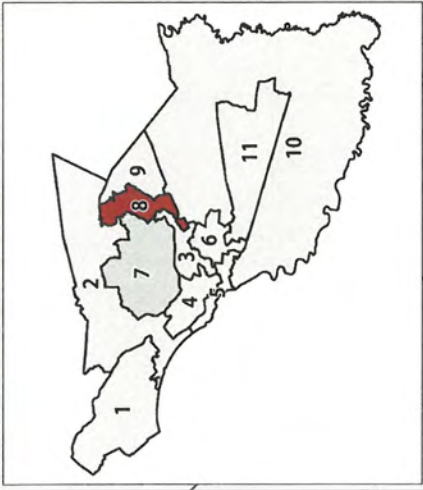




# RICHLAND COUNTY TRANSPORTATION PLANNING MEETING 2024

## COUNCIL DISTRICT 8

### CURRENTLY PLANNED PROJECTS

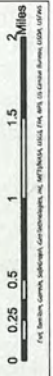


**Disclaimer**

Displays are for planning purposes only and represent data available through January 10, 2024

**Legend**

- COATS - Widening
- ★ COATS - Intersection Improvements
- ◇ COATS - Safety Improvements
- COATS - Special Projects
- SCDOT - Bridge Replacement
- ... Richland County - Greenway
- Richland County - Sidewalk
- Richland County - Widening
- ★ Richland County - Intersection Improvements
- Richland County - Special (Widening/Extension)
- Richland County - Special (Neighborhood Improvement)
- ◇ Richland County - Special (Intersection Improvement)

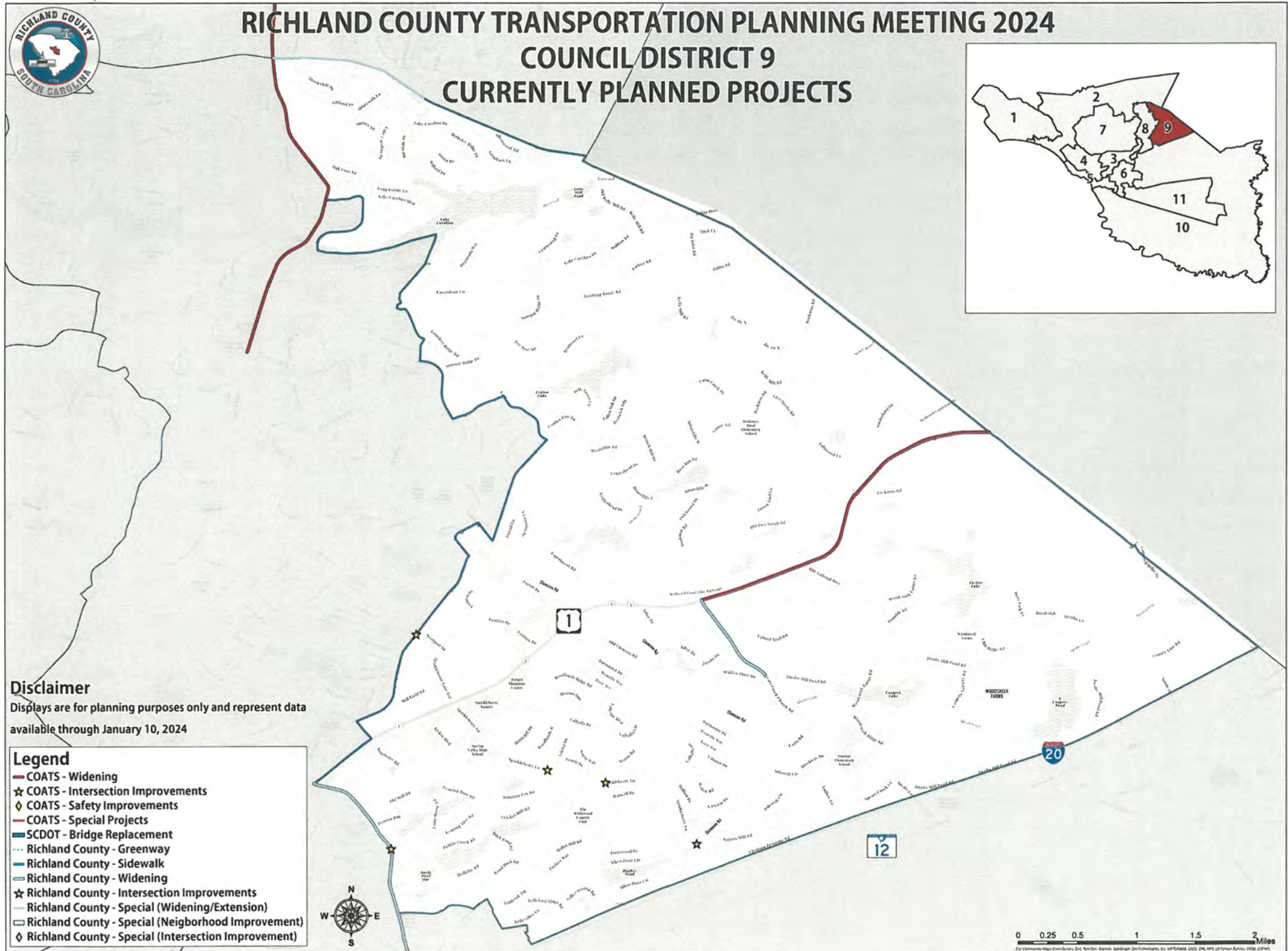
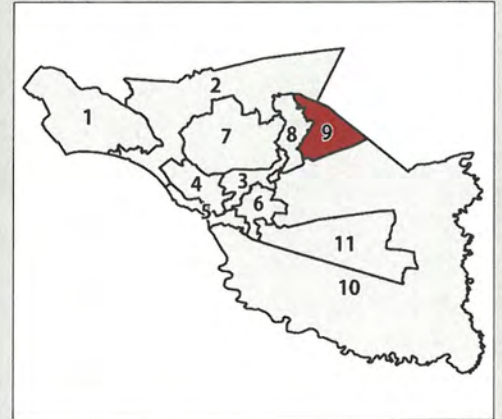




# RICHLAND COUNTY TRANSPORTATION PLANNING MEETING 2024

## COUNCIL DISTRICT 9

### CURRENTLY PLANNED PROJECTS



**Disclaimer**  
 Displays are for planning purposes only and represent data available through January 10, 2024

- Legend**
- COATS - Widening
  - ★ COATS - Intersection Improvements
  - ◆ COATS - Safety Improvements
  - COATS - Special Projects
  - SCDOT - Bridge Replacement
  - ⋯ Richland County - Greenway
  - Richland County - Sidewalk
  - Richland County - Widening
  - ★ Richland County - Intersection Improvements
  - Richland County - Special (Widening/Extension)
  - Richland County - Special (Neighborhood Improvement)
  - ◆ Richland County - Special (Intersection Improvement)



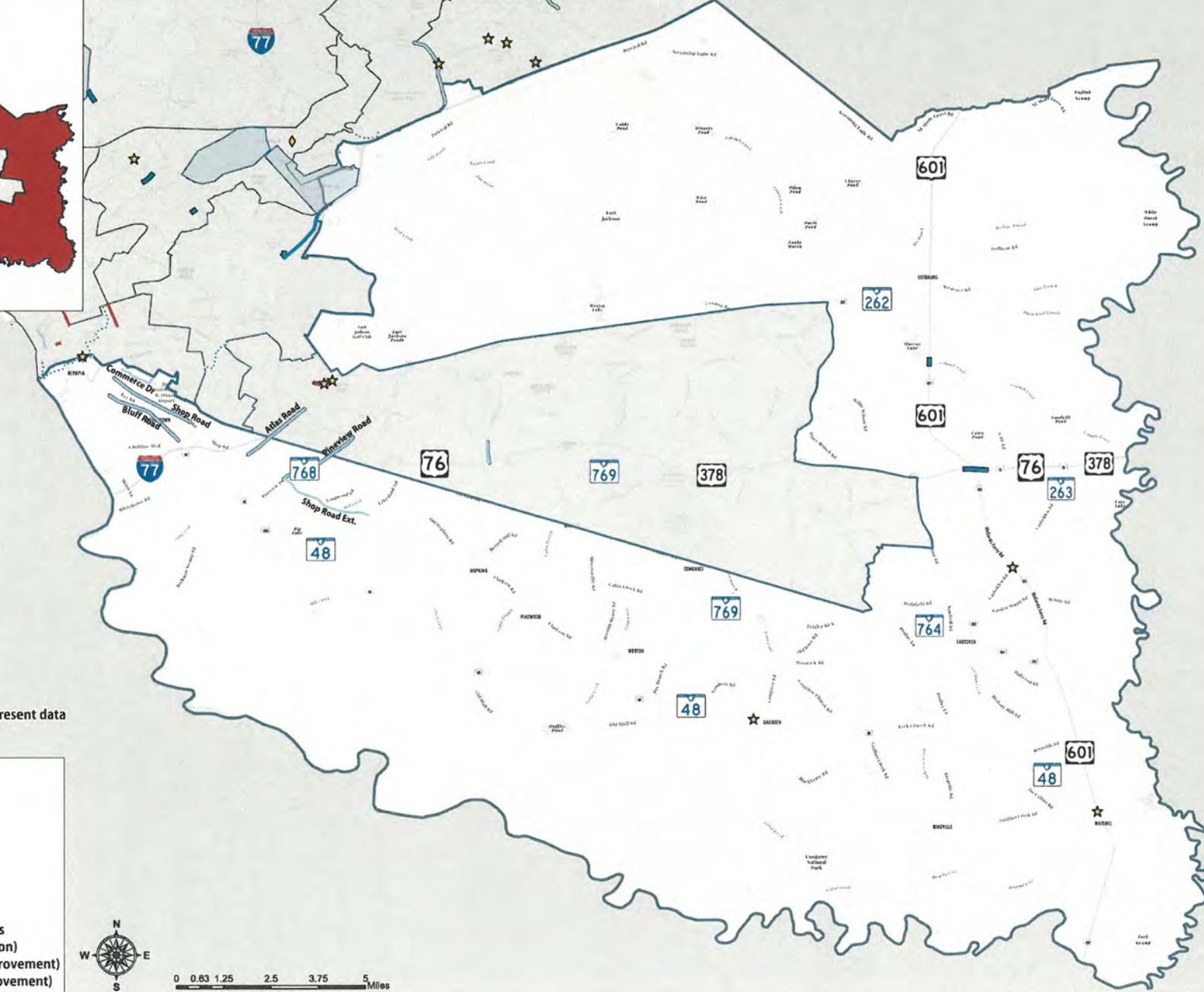
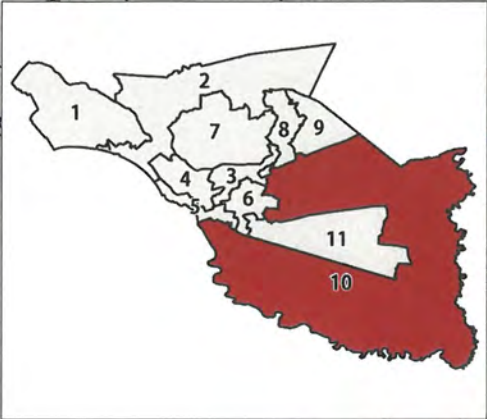
For Community Maps Contributors, Ed. Nathan, Dennis, Spidigan, GeoInformation, Inc., MAPBOX, GOOGLE, IBM, HERE, LIDAR, HERE, HERE, HERE



# RICHLAND COUNTY TRANSPORTATION PLANNING MEETING 2024

## COUNCIL DISTRICT 10

### CURRENTLY PLANNED PROJECTS



#### Disclaimer

Displays are for planning purposes only and represent data available through January 10, 2024

#### Legend

- COATS - Widening
- ★ COATS - Intersection Improvements
- ◇ COATS - Safety Improvements
- COATS - Special Projects
- SCDOT - Bridge Replacement
- ⋯ Richland County - Greenway
- Richland County - Sidewalk
- Richland County - Widening
- ★ Richland County - Intersection Improvements
- Richland County - Special (Widening/Extension)
- Richland County - Special (Neighborhood Improvement)
- ◇ Richland County - Special (Intersection Improvement)



0 0.83 1.25 2.5 3.75 5 Miles

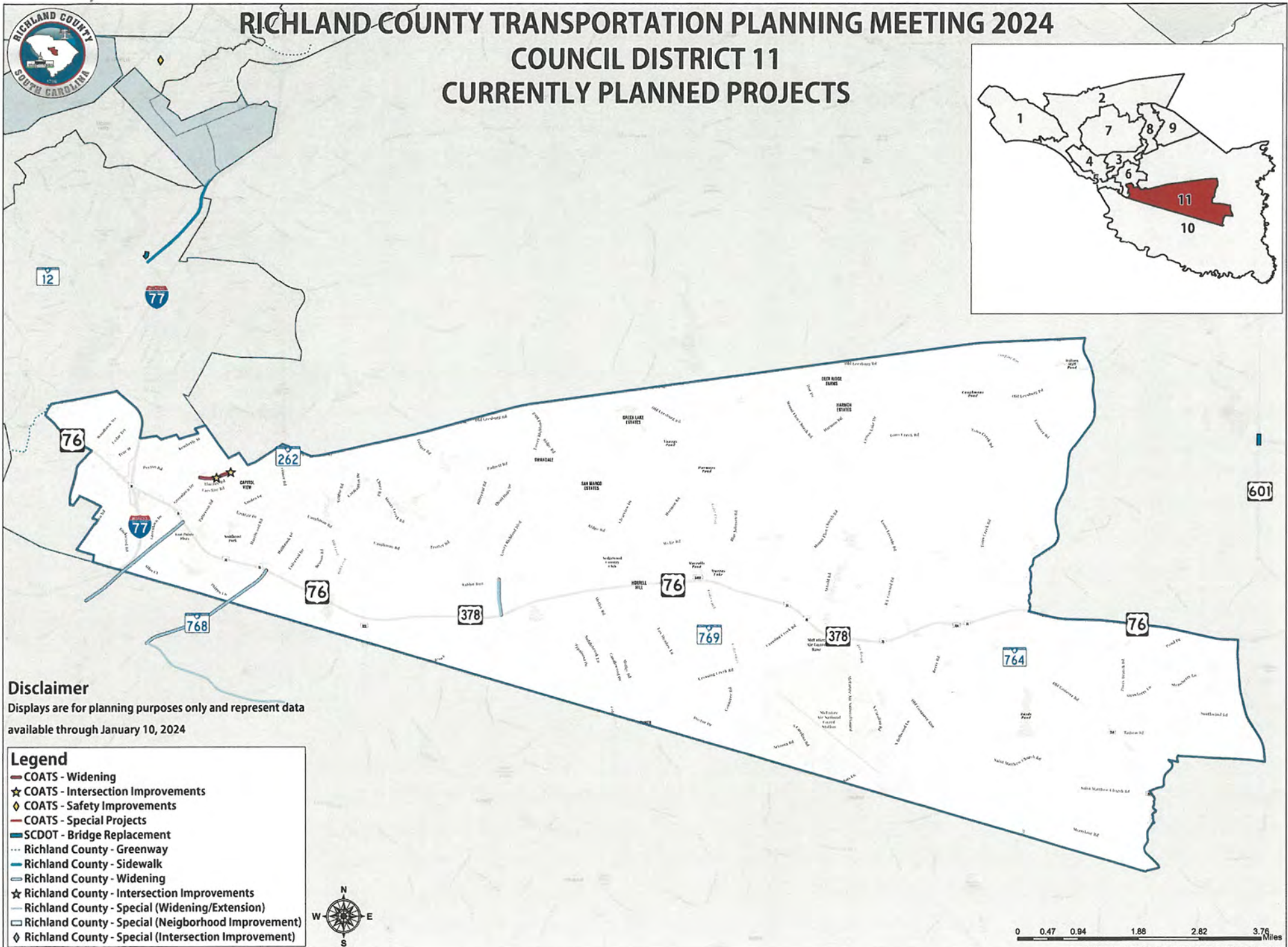
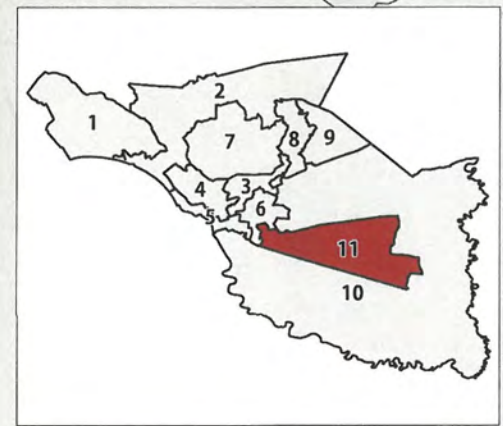
Esri, Garmin, DeLorme, GeoEye, GeoEye/GeoEye, Inc., NAVER, IGN, CNES, Airbus, IGN, U.S. Dept. of Commerce, Esri, DeLorme, GeoEye, GeoEye/GeoEye, Inc., NAVER, IGN, CNES, Airbus, IGN, U.S. Dept. of Commerce, Esri



# RICHLAND COUNTY TRANSPORTATION PLANNING MEETING 2024

## COUNCIL DISTRICT 11

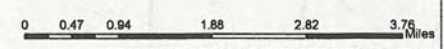
### CURRENTLY PLANNED PROJECTS



**Disclaimer**  
 Displays are for planning purposes only and represent data available through January 10, 2024

**Legend**

- COATS - Widening
- ★ COATS - Intersection Improvements
- ◆ COATS - Safety Improvements
- COATS - Special Projects
- SCDOT - Bridge Replacement
- Richland County - Greenway
- Richland County - Sidewalk
- Richland County - Widening
- ★ Richland County - Intersection Improvements
- Richland County - Special (Widening/Extension)
- Richland County - Special (Neighborhood Improvement)
- ◆ Richland County - Special (Intersection Improvement)



Esri, Bentley, Garmin, TomTom, Garmin, GeoEye, GeoEye, IGN, Aerotech, GEBCO, CNR, IGN, US FWS, US Forest Service, USDA, NOAA